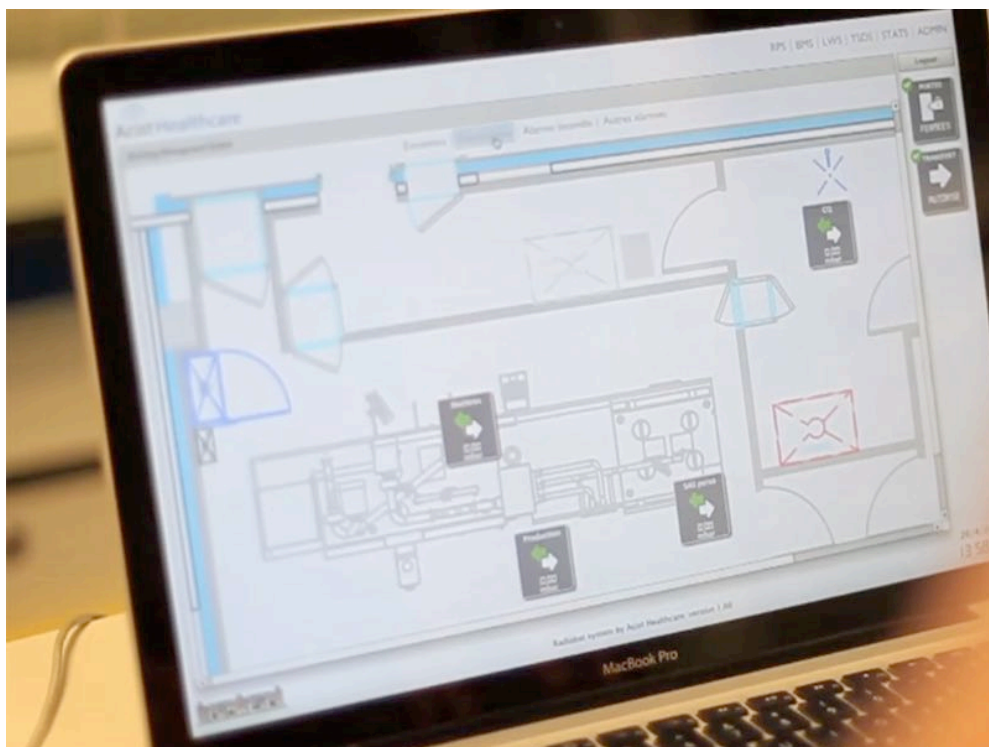


DATA SHEET
**Safety Rules
 System**



Safety Rules System :

S.R.S collects all information from facility to provide actions or signals. The rules are designed by the customer.

The collected information are provided by facility components, like fire alarm, fire damper, ventilation, pressure,

S.R.S collects these signals and executes the rules designed by the customer (based on combinatories)

The result of this rule (combinatory) provides an action like activate a signal, display a message, send an email, send a sms,

S.R.S. is perfect to give cyclotron beam authorization, transfer authorization, building safety state,

S.R.S. can collect all information type boolean, analogic, counter, serial protocol, usb,

Operating Process

S.R.S checks the facility, gives a «Building Ready» status, authorizes cyclotron beam, transfer or other defined actions by user.

S.R.S allows building management by:

> Controlling cyclotron process and transfer process

> Interfacing with all facility alarm systems and components

> Checking ventilation and fire dampers status

> Informing staff on all defects arising in the facility.

Database collects the information for displaying, alerting and backup.

Module's screens are specific but can be designed according to your needs.

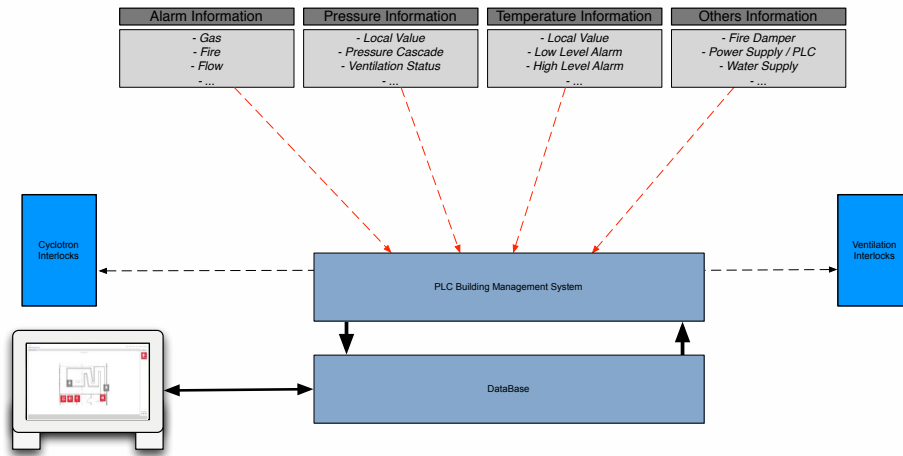
Database can be used in maintenance mode or multi-site mode through remote access



Acist Healthcare solution is designed to collect the facility information. Acist Healthcare solution allows supervising, alerting and acting on installation in order to preserve property and persons. Acist Healthcare solution is equipped with different modules to control radiation, to manage transfer or the cyclotron access. These modules are integrated in function of your needs. Acist Healthcare solution can be used in multi-site mode from a remote single point (service center for example).

Acist Healthcare solution

www.acist-healthcare.com



S.R.S. Features

Collected signal type

Boolean	Relay Free contact or 24V signal
Analogic	0-10 Volts or 0-30 mA
Counter	Until 20 kHz
Serial	RS232 - RS485 - RS422 (in option)

Combinatory

Operator	AND / OR / NOT ...
Number	No limit
Recursive	Yes

PLC

1 - (S7-200)

Boolean

24 Input / 16 Output

Analogic (option)

4

Counter

4

Serial

1*RS485

Available Options

- Additional Analogic input
- Additional Boolean input
- Additional Relay input
- Additional Serial Port RS232 or RS422 or RS485
- Additional USB Port
- Extended Warranty (up to 5 years)

- **SRS is a Building Management System**

- **SRS checks all facility component to provide a signal or authorization**

- **SRS manages alarm and history**

- **SRS manages user rights.**

- **SRS allows to define customer safety rules.**

- **SRS supports remote access**

- **SRS is part of Acist Healthcare solution.**